

# Roxtec R X transit

Transit for sealing around multiple cables and pipes in a limited area without welding or bolting.

The Roxtec RX is a round cable and pipe transit with a sleeve for attachment through expansion. The standard sealing modules are adaptable to cables and pipes of different sizes and can be used to build in spare capacity in the transit. When the bolts are tightened, the rubber gasket on the outside of the sleeve expands in the hole to firm attachment.



- Perfect for retrofit
- Quick and easy to install
- Adapts to cables and pipes of different sizes

**Product characteristics**



Fire rated



Watertight



Gas-tight

**Structure of installation**



Metal

**Mounting type**



Existing hole

## Ratings & certificates

**Fire**

- A-CLASS according to IMO 2010 FTP Code

**Tightness**

- Gas: 2.67 bar (catastrophic)
- Water: 4 bar (catastrophic)

## Frame dimensions

**in/lbs**

The frame variants below are a limited selection. For the full range of frames and configurations, please visit [roxtec.com](https://www.roxtec.com).

| Product              | Packing space | Aperture dimensions<br>Ø | Weight | Art. no       |
|----------------------|---------------|--------------------------|--------|---------------|
| R X 125 AISI316/GALV | 3.15 x 3.15   | 6.693 - 6.772            | 7.3    | RXG0001251021 |
| R X 125 GALV/GALV    | 3.15 x 3.15   | 6.693 - 6.772            | 7.6    | RXG0001251018 |
| R X 150 AISI316/GALV | 3.543 x 3.543 | 7.835 - 7.913            | 7.7    | RXG0001501021 |
| R X 150 GALV/GALV    | 3.543 x 3.543 | 7.835 - 7.913            | 7.7    | RXG0001501018 |
| R X 200 AISI316/GALV | 4.724 x 4.724 | 9.843 - 9.921            | 10.1   | RXG0002001021 |
| R X 200 GALV/GALV    | 4.724 x 4.724 | 9.843 - 9.921            | 10.1   | RXG0002001018 |
| R X 75 AISI316/GALV  | 1.575 x 1.575 | 4.528 - 4.606            | 3.5    | RXG0000751021 |
| R X 100 AISI316/GALV | 2.362 x 2.362 | 5.709 - 5.787            | 6.7    | RXG0001001021 |
| R X 100 GALV/GALV    | 2.362 x 2.362 | 5.709 - 5.787            | 4.9    | RXG0001001018 |

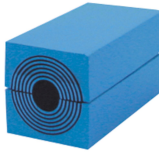


# Sealing components

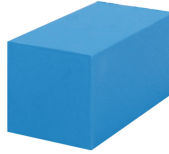
## Sealing components



Lubricant



RM module with Multidiameter™



RM solid compensation module

For detailed information, please visit [roxtec.com](https://www.roxtec.com).

The product information provided by Roxtec does not release the purchaser of the Roxtec system, or part thereof, from the obligation to independently determine the suitability of the products for the intended process, installation and/or use.

Roxtec gives no guarantee for the Roxtec system or any part thereof and assumes no liability for any loss or damage whatsoever, whether direct, indirect, consequential, loss of profit or otherwise, occurred or caused by the Roxtec systems or installations containing components not manufactured by an authorized manufacturer and/or occurred or caused by the use of the Roxtec system in a manner or for an application other than for which the Roxtec system was designed or intended.

Roxtec expressly excludes any implied warranties of merchantability and fitness for a particular purpose and all other express or implied representations and warranties provided by statute or common law. User determines suitability of the Roxtec system for intended use and assumes all risk and liability in connection therewith. In no event shall Roxtec be liable for indirect, consequential, punitive, special, exemplary or incidental damages or losses.

The Roxtec products are offered and sold in accordance with the conditions of the Roxtec General Terms of Sales. The latest version of the Roxtec General Terms of Sales can be downloaded from <https://www.roxtec.com/en/about-us/about-roxtec/general-terms-of-sales/>

We reserve the right to make changes to the product and technical information without further notice. Any errors in print or entry are no claims for indemnity. The content of this publication is the property of Roxtec International AB and is protected by copyright.

This document was generated on: 2024-05-02